

# OPUS Vessel™

Vessel Management Solution



## Control Variation, Deliver Reliability

The expansion of global trade has increased marine traffic, resulting in a demand for large-sized and high-speed vessels. The stable operation and efficient management of vessels became a major concern to ship management companies.

OPUS Vessel™ is a fully integrated on-line solution that promotes safe operation of the vessel. Shipping and ship management companies can implement a flexible scalable system that improves work processes by business automation and systematic vessel operation. The safe vessel operation is guaranteed by CyberLogitec's technical expertise, which has been accumulated over the past decades.

The user-friendly OPUS Vessel™ improves business efficiency and customer satisfaction. It is comprised of independent modules, including Vessel Maintenance & Engineering Management, Vessel Operation Management, Vessel Safety Management, and Vessel Document Management. They are fully integrated to operate as one complete system.

OPUS Vessel™ supports reliable vessel operation with the following features.

- Support Maintenance & Repair
- Decrease Fuel Oil Consumption
- Plan Operation Expense
- Prevent Vessel Accidents
- Analyze Vessel Operation
- Manage Documents & Reports

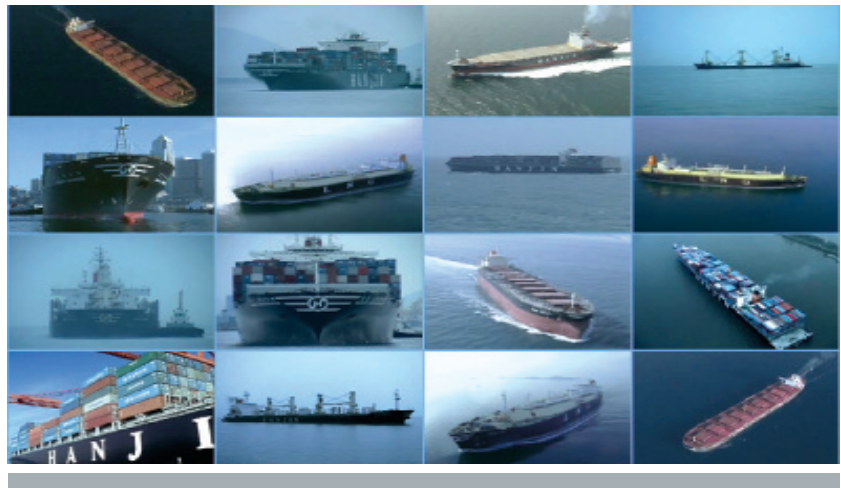


AC - 03236

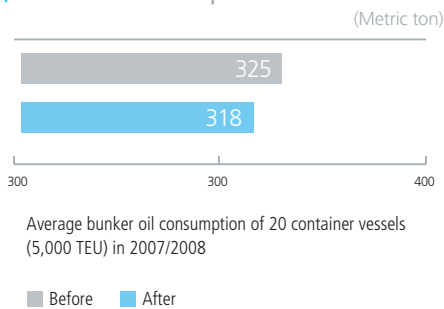
Hanjin Shipping Affiliate



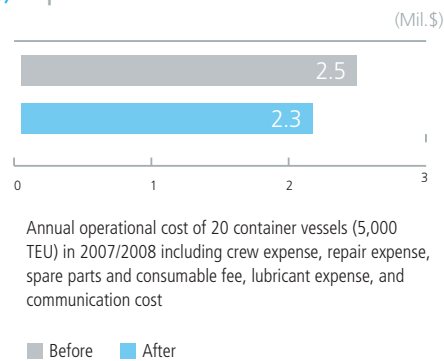
# Perform Vessel Schedule Accuracy



## » Fuel Oil Consumption



## » Operation Cost



"Vessel cost forecasting is more reliable after implementing OPUS Vessel™. It is a unique solution for our company to operate our fleet safely in a low operating cost, achieving customer satisfaction."

Jae-Heog Ryu  
CEO, Hanjin Ship Management

## | Support Maintenance & Repair |

OPUS Vessel™ provides analysis reports and data management covering vessel repair, maintenance, supply, and inspection from the vessel to the shore office. Shipping and ship management companies can maintain inventory levels, based on effective data and appropriate dissemination of the supply cycle and quantity, reducing logistics costs and time. Features provided:

- PMS (Preventive & Planned Maintenance System)
- Repair
- History
- Supply
- Inventory
- Performance/Measuring
- Survey (CMS)

## | Decrease Fuel Oil Consumption |

Shipping and ship management companies can minimize financial risk from the fluctuation of oil cost by reducing the proportion of fuel cost in vessel operating cost. Moreover, it strengthens companies' competitiveness through decreasing carbon emission that vessels generate.

OPUS Vessel™ supports an optimized supply of fuel oil as it manages vessel operating history data. Analyzing each vessel's voyage history and refueling data, OPUS Vessel™ calculates and provides reasonable fuel levels. It enhances fuel efficiency and decreases fuel expenses by reducing the loading of unnecessary oil. For optimum fuel oil consumption, OPUS Vessel™ creates analyzed data and provides monitored information.

- Market Price and Charged Standard Price of Oil by Port
- Request/Supply Standard by Voyage/Vessel
- Fuel Oil Consumption by Voyage/Route
- Fuel Oil Consumption and Standard Creation by Vessel Type

## | Plan Operation Expense |

OPUS Vessel™ collects expense records regarding vessel operation and analyzes it in order to create vessel operation plans. Vessel operators can manage the statistical data including the cause of error and improvement plan, which are generated by comparing the actual cost with the operation expense plan. This report enhances accurate vessel operation planning and reduces the operation cost.

- Cost History/Expenditure
- Cost Planning, Forecasting, and Budgeting
- Cost Statistics and Trend



## User-Friendly, Reliable Operation

### | Prevent Vessel Accidents |

In order to prevent losses and schedule delays from vessel accidents, OPUS Vessel™ systematically manages and analyzes incidents. It objectively examines the cause and provides comprehensive measures. For safety quality maintenance, it provides ISM examination maintenance, PSC inspection management, and inconsistency management, risk evaluation by vessel activity, risk identification, and risk control. Users can easily implement functions necessary to manage organized information.

- Safety Status
- Vessel Accident/ Incident
- Port State Control
- Internal/External Audit
- Nonconformity Management
- Risk Assessment
- Improvement

### | Analyze Vessel Operation |

OPUS Vessel™ supports proficient vessel operation with management of vessel schedules, voyage status and results, port information sharing, and Chart & Pub data.

With data transmission by using INMARSAT, it guarantees quick and accurate work handling. With INMARSAT's speed and data accuracy, exchange of operational and decision data can be used to save man-hours and increase business productivity.

- Vessel Schedule
- Passage Plan
- Vessel Particulars
- Vessel Tracking
- Operational Report & Performance
- Port Information
- Chart & Publication

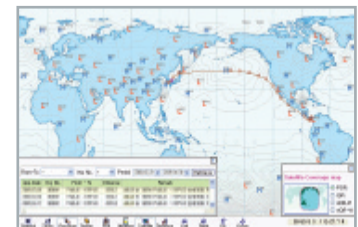
### | Manage Documents & Reports |

The accessibility is strengthened by clear arrangement of vessel documents such as vessel reports, manuals, and certifications. Through specific document management, vessels can obtain documents that are recently updated and newly produced.

- EDMS
- Vessel Certificate



» Maintenance - Performance & Measuring of M/E, G/E



» Operation - Vessel Tracking



» Safety - Cause Trend

## 📦 Solution

### 01 Terminal & Yard

- OPUS Terminal™
- OPUS Yard™
- OPUS Stowage™
- OPUS Docking™

### 02 Shipping & Logistics

- OPUS Container™
- OPUS Bulk™
- OPUS Vessel™
- OPUS Forwarding™
- OPUS 3PL™

### 03 General Industry

- OPUS CRM™
- OPUS ERM™
- OPUS FECO™
- OPUS EDI™
- UC Dream™

## 📦 Service

### 01 Consulting

- Information Strategic Planning
- Process Innovation
- Enterprise Architecture

### 02 System Integration

- Application Development
- System Implementation & Installation

### 03 IT Outsourcing

- Application Development
- Data Center & Network Operation
- Architecture

### 04 ASP Service

- EDI
- 3PL (Forwarding)
- UC (Unified Communications)

## 📦 R & D

- Optimization Engine Development
- Maxpider™ (Development Platform)
- Software Package Development Methodology
- CMMI Level 3 Certification

For more information,  
please contact  
[sales@cyberlogitec.com](mailto:sales@cyberlogitec.com)  
+82 2 6350 2342

CyberLogitec, an IT affiliate company of Hanjin Shipping, is an IT solution provider specialized in the shipping, terminal and logistics industry. Based on worldwide branch offices and extensive experience, CyberLogitec also provides consistent IT outsourcing and implementation service to our customers around the world. Furthermore, CyberLogitec's R&D center is on track with technology and continues to lead our customers to success in the digital economy.



[www.cyberlogitec.com](http://www.cyberlogitec.com)

#### Headquarter

16th FL, R&D Tower, 1605 NURITCUM  
SQUARE, Sangam-dong, Mapo-gu,  
Seoul 121-795, Korea  
TEL : +82-2-6350-2000  
FAX : +82-2-6350-2050

#### USA Office

80 East Route 4 Suite 490  
Paramus, NJ 07652 USA  
TEL : +1-201-291-4700  
FAX : +1-201-291-9866

#### China Office

Floor 26, No.620, Zhang Yang Road,  
Pudong, Shanghai Zhongrong Hengrui  
International Plaza, P.R. China 200122  
TEL : +86-21-2899-5330  
FAX : +86-21-2899-5358

#### Germany Office

Admiralitatstrasse 56,  
20459 Hamburg, Germany  
TEL : +49-40-37685-441  
FAX : +49-40-37685-440